
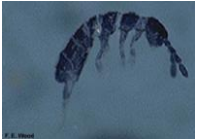








Healthy Homes - Household Insect Pest Resource Guide

<u>Name of Publication</u>	<u>Source</u>	<u>Publication Number</u>	<u>Pest Pictures</u>
<u>Section 1 – Pests in the Home</u>			
<u>General</u>			
Keys to Pests In and Around the Home	Univ. of MD*	HG 41	
Occasional Invaders	Univ. of MD	HG 8	
Invisible Itches: Insect and Non-insect Causes	Univ. of KY**	ENT-58	
Integrated Pest Management (IPM) in and Around the Home	Ohio State Univ.***	HYG-2159-96	
Firewood Insects	Ohio State Univ.	HYG-2065-96	
<u>Ants</u>			
Ants and Their Control	Univ. of MD	HG 7	
Ants in and Around the Home	Ohio State Univ.	HYG-2064-96	
Carpenter Ants	Univ. of MD	EL 115	
Carpenter Ants	Ohio State Univ.	HYG-2063-94	
<u>Bed Bugs</u>			
Bed Bugs	Univ. of KY	Entfact 636	
Beg Bugs	Ohio State Univ.	HYG – 2105 - 04	
Bed Bug Control	Harvard University ⁺		
<u>Bees</u>			
Common Stinging Insects: Wasps and Bees	Univ. of MD	Bulletin 248	
Carpenter Bees	Univ. of MD	HG 29	
Mining Bees and Ground Nesting Wasps	Univ. of MD	HG 104	
<u>Beetles</u>			
Wood-Boring Beetles: Old House Borer and Powderpost Beetle	Univ. of MD	FS 689	
Old House Borer	Penn State Univ.~	HP-8	
Powderpost Beetles	Ohio State Univ.	HYG-2090-96	
Powderpost Beetles	Penn State Univ.	HP-9	

Bugs

The Boxelder Bug

Univ. of MD

HG 10



Boxelder Bug

Centipedes and Millipedes

Centipedes

Millipedes

Ohio State Univ.

HYG-2067-94

Ohio State Univ.

HYG-2067A-94



Centipede



Centipede



Millipede

Chiggers

Chiggers

Univ. of MD

HG 79



Chigger

Cockroaches

Cockroaches

American Cockroach

German Cockroaches

Least Toxic Methods of Cockroach Control

Cockroach Elimination

A Practical Guide to Cockroach Control in
Multi-Family Housing Units

Univ. of MD

HG 15

Ohio State Univ.

HYG-52096-97

Penn State Univ.

HP-12

Univ. of FL

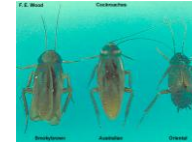
ENY-258

Univ. of KY

Entfact-614

Purdue Univ.^

E-241-W



Cockroaches



Brown Banded Roach

Crickets

Crickets

Crickets

Univ. of MD

EL-50

Ohio State Univ.

HYG-2066-94



Field Cricket

Earwigs

Earwigs

Earwigs

Univ. of MD

HG 4

Ohio State Univ.

HYG-2068-94



Earwig

Fabric Pests

Fabric Pests

Black Carpet Beetle

Clothes Moth

Univ. of MD

HG 80

Penn State Univ.

HP-11

Penn State Univ.

HP-17



Clothes Moth



Carpet Beetles



Carpet Beetle
& Larva

Fleas

Fleas
Fleas: Biology and Public Health Risk
Fleas
Pet-Centered Flea Prevention and Control

Univ. of MD
Purdue Univ.
Ohio State Univ.
Univ. of KY
HG 27
E-247-W
HYG-2081-97
Entfact – 628



Cat Flea



Flea Larva

Flies

Flies in and Around the Home
Flies in the Home
Fly Control Around the Home
Drain Flies

Univ. of MD
Univ. of NE^^
Perdue Univ.
Univ. of KY
HG 26
015-98
E-7-W
Entfact – 615



Cluster Fly



Drain Fly



Fruit Fly



House Fly

Pantry Pests

Pantry Pests
Insect Pests of Home Stored Foods
Managing Pantry Pests
Saw-Toothed Grain Beetle
Indian Meal Moth
Red and Confused Flour Beetles

Univ. of MD
Purdue Univ.
Univ. of NE
Clemson Univ.^^^
Purdue Univ.
Purdue Univ.
HG 67
E-37-W
304
E-223-W
E-224-W



Saw-Toothed Grain Beetle



Indian Meal Moth

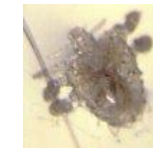
Lice

Human Lice: Biology and Public Health Risk
Human Lice
Booklice

Purdue Univ.
Ohio State Univ.
Ohio State Univ.
E-245-W
HYG-2094-96
HYG-2080-98



Head Louse



Crab Louse

Mites

Mites Annoying Humans
House Dust Mites
Parasitic Mites of Humans

Ohio State Univ.
Univ. of KY
Univ. of KY
HYG-2101-95
Entfact-646
Entfact-637

Mosquitoes

Mosquitoes
Protecting Yourself From Mosquito Bites

Ohio State Univ.
Univ. of MD
HYG-2058-98
FS 811



Mosquito

Silverfish

Silverfish and Firebrats
The Bristletails

Univ. of MD
Penn State Univ.
HG 5
HP-18



Firebrat

Snakes
Snakes

Univ. of MD HG 64

Spiders

Controlling Spiders in Maryland
Spiders in and Around the House
Brown Recluse Spider
Black Widow Spider
Sac Spiders
Daddy-Long-Legs

Univ. of MD EB 241
Ohio State Univ. HYG-2060-04
Ohio State Univ. HYG-2061-04
Ohio State Univ. HYG-2061A-04
Ohio State Univ. HYG-2060A-04
Ohio State Univ. HYG-2060B-04



Black Widow



Brown Recluse



Yellow House

Termites

Termites: Prevention, Detection, Control
Homeowners' Guide to Termite Baits
Selecting a Termite Control Service

Univ. of MD B 245
Univ. of MD FS 772
Purdue Univ. E-2-W



Termite Workers
& Soldiers



Swarming Winged
Adults

Ticks

Lyme Disease and the Deer Tick in MD.
Ticks
Ticks – Biology and Their Control

Univ. of MD FS 595
Ohio State Univ. HYG-2073-07
Purdue Univ. E-71-W



American Tick



Deer Tick



Dog Tick

Pest Control

Limitations of Home Insect Foggers (Bombs)
Thermal Deinfestation of Household Items
How to Pest-Proof Your Home
IPM Series: Houseplants

Univ. of KY Entfact – 643
Univ. of KY Entfact – 640
Univ. of KY Entfact – 641
Univ. of MD HG 60



Soft Brown Scale

Section 2 – Beneficial Insects

Beneficial Insects and Mites
Common Beneficial Insects in the Home Landscape
Common Beneficial Insects in the Home Landscape –
A Pictorial Guide

Univ. of MD HG 6
Beth Hill
Beth Hill

Section 3 – Basic Insect Information

Is It an Insect?	Beth Hill	
The Parts of an Insect	Univ. Of MD	4-H 225
A Basic Guide to Entomology	Beth Hill	
Let's Learn to Identify Common Insect Groups	Beth Hill	
Common Insect Pests in the Home Landscape	Beth Hill	
Insect Pests in the Home Landscape – A Pictorial Guide	Beth Hill	

Section 4 – Resource Lists

Ohio State University	Extension Series	“Insect and Pest Series Index”
Pennsylvania State University	Department of Entomology	“Extension Fact Sheets”
University of Kentucky	Department of Entomology	“ENTfacts”
University of Maryland	AGNR, MCE Publications Catalog	“Lawn, Garden and Home”
University of Nebraska – Lincoln	UNL Extension in Lancaster County	“ Insects, Spiders, and More”

Publications on the Web:

* University of Maryland	MD Cooperative Extension - www.agnr.umd.edu/MCE/Publications/ or MD Home & Garden Information Center - www.hgic.umd.edu/content/onlinepublications.cfm
** University of Kentucky - Entfacts	www.ca.uky.edu/entomology/dept/entfacts.asp
*** Ohio State University	http://ohioline.osu.edu/hyg-fact/2000/
^ Purdue University	www.entm.purdue.edu/entomology/ext/
^^ University of Nebraska - Lincoln	http://lancaster.unl.edu/pest/
^^^ Clemson University	http://entweb/clemson.edu/cuentres/eiis/index.htm
+ Harvard University	www.uos.harvard.edu/ehs/enviro/bedbug_brochure.pdf
~ Penn State University	http://www.ento.psu.edu/extension/fact_sheets.html

Assembled by: *Elizabeth M. S. Hill*, Faculty Extension Assistant, 4-H Youth Development

University of Maryland Extension, Kent County

709 Morgnec Road, Suite 202

Chestertown, MD 21620

410-778-1661

Fax: 410-778-9075

emshill@umd.edu

Developed 6/29/07, Revised 10/13/09



UNIVERSITY OF
MARYLAND
EXTENSION
Solutions in your community