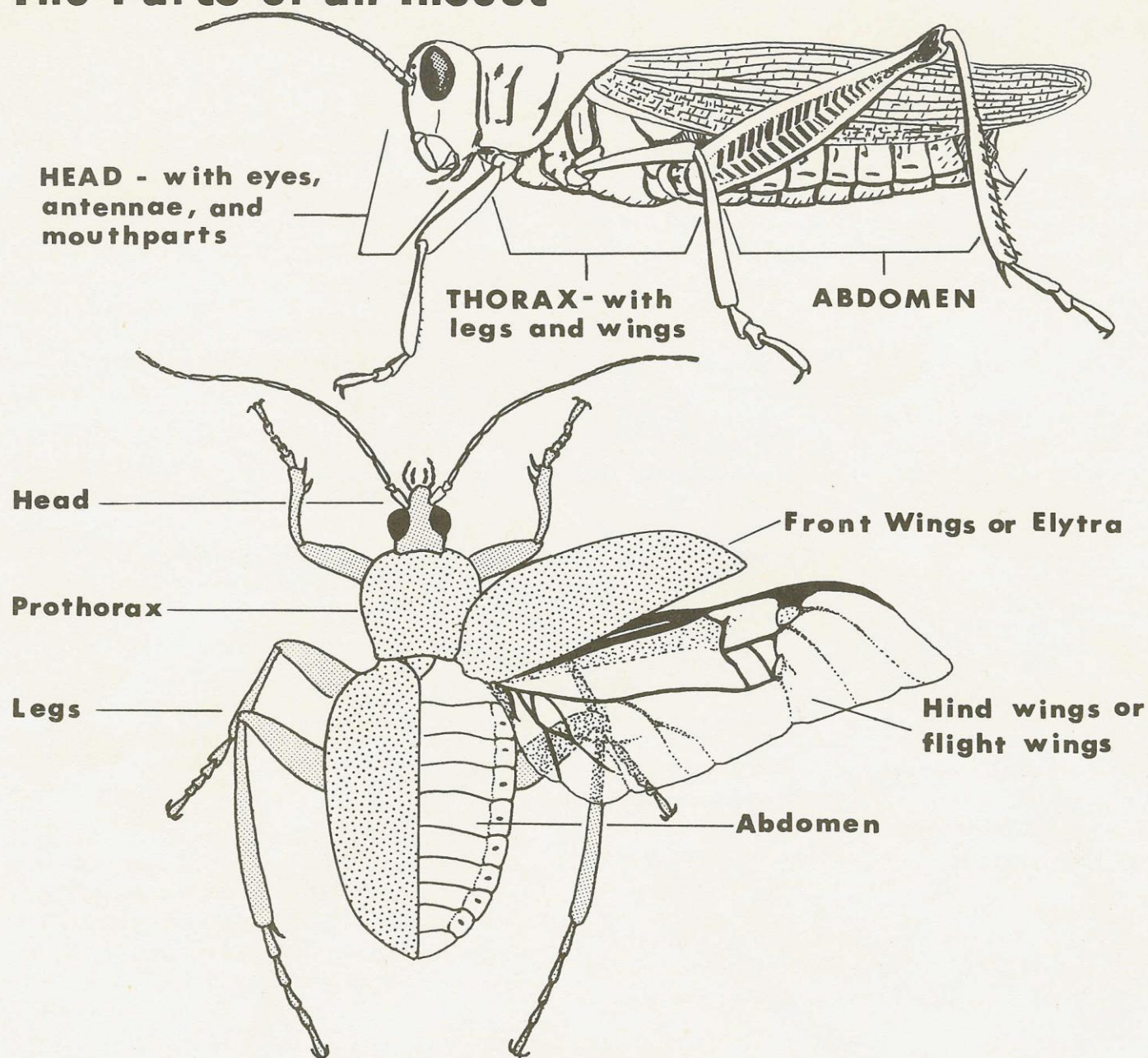


# Maryland 4-H Entomology

## The Parts of an Insect



From: Maryland 4-H Entomology Manual

Prepared by:  
F. E. Wood  
Department of Entomology

4-H 225  
Printed 1966  
Revised 1971  
Revised 1985-86

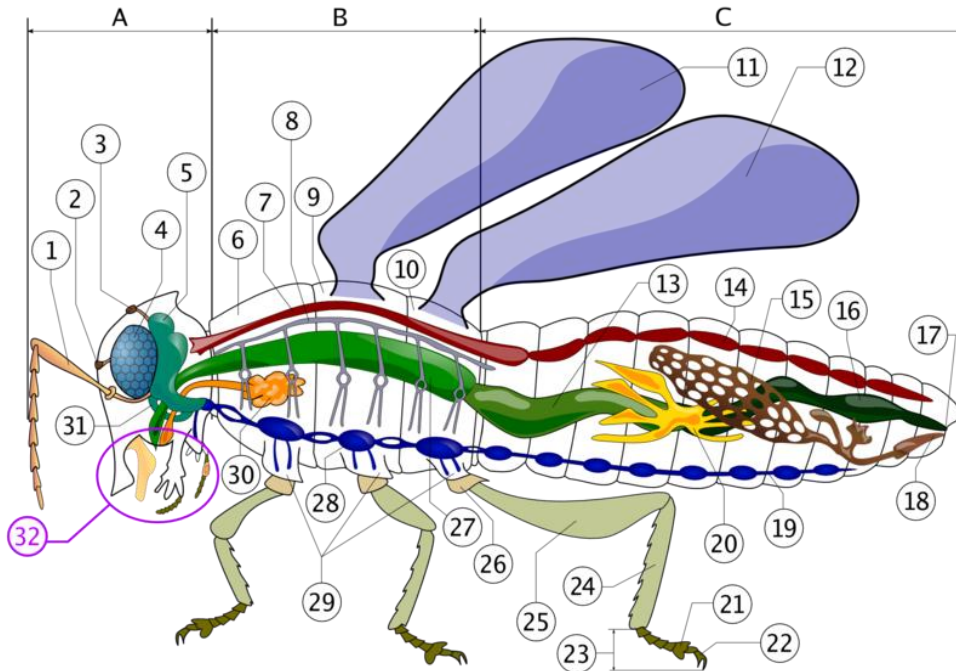


UNIVERSITY OF  
**MARYLAND**  
EXTENSION  
*Solutions in your community*

University of Maryland Extension programs are open to all citizens without regard to race, color, gender, disability, religion, age, sexual orientation, marital or parental status, or national origin.

# Insect anatomy

A- Head B- Thorax C- Abdomen



1. antenna
2. ocelli (lower)
3. ocelli (upper)
4. compound eye
5. brain (cerebral ganglia)
6. prothorax
7. dorsal artery
8. tracheal tubes (trunk with spiracle)
9. mesothorax
10. metathorax
11. forewing
12. hindwing
13. mid-gut (stomach)
14. heart
15. ovary
16. hind-gut (intestine, rectum &anus)
17. anus
18. vagina

19. nerve chord (abdominal ganglia)
20. Malpighian tubes
21. pillow
22. claws
23. tarsus
24. tibia
25. femur
26. trochanter
27. fore-gut (crop, gizzard)
28. thoracic ganglion
29. coxa
30. salivary gland
31. subesophageal ganglion
32. mouthparts

By Piotr Jaworski, [PioM](#); 17 V 2005r.,  
POLAND/Poznań, Insect scheme; license: CC  
Attribution-ShareAlike 2.0  
(<http://creativecommons.org/licenses/by-sa/2.0/>)  
{ {cc-by-sa-2.0} }From Wikipedia,  
[www.wikipedia.com](http://www.wikipedia.com)

Revised 2/9/11